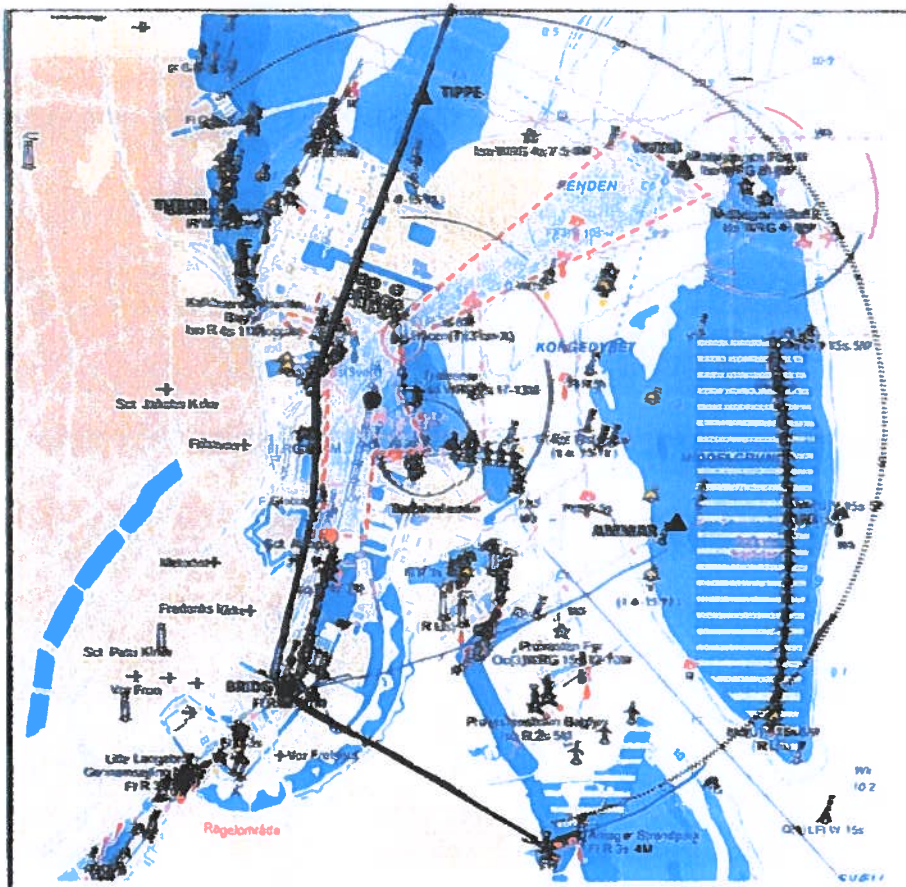


København

Sagsnr.: 2023-147279

Dokumentnr.: 1901170

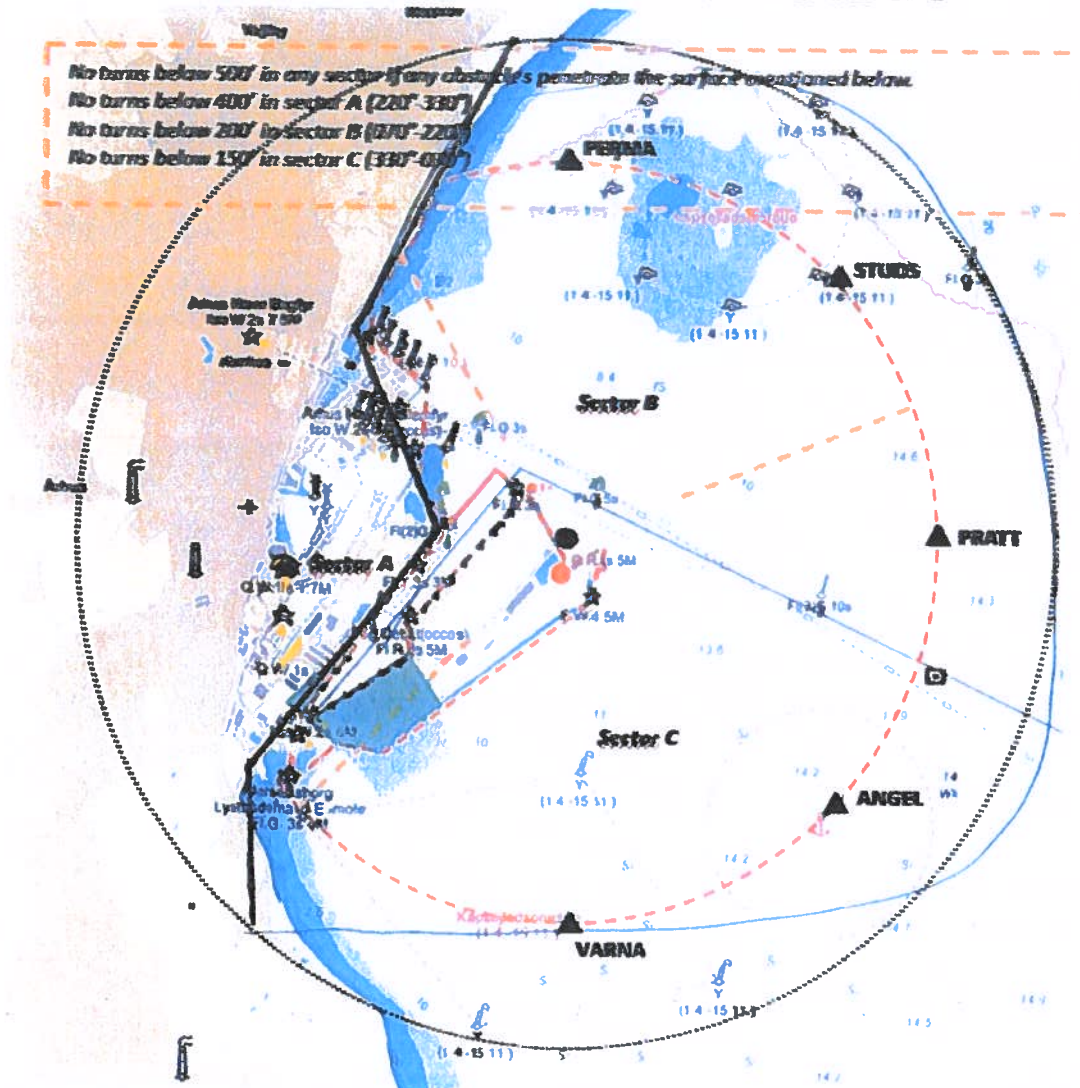
Kortbilag 1:



Århus



PRIMÆRT MANØVREOMRÅDE – EKAC – SEKTOR B & C



PRIMARY MANOUVERING AREA

All lines used must minimum meet the following criteria:

TORA: 799 m.

Clearway: 150 m. x 400 m.

Stopway: 400 m.

TODA/ASDA: 1199 m.

LDA: 799 m

